

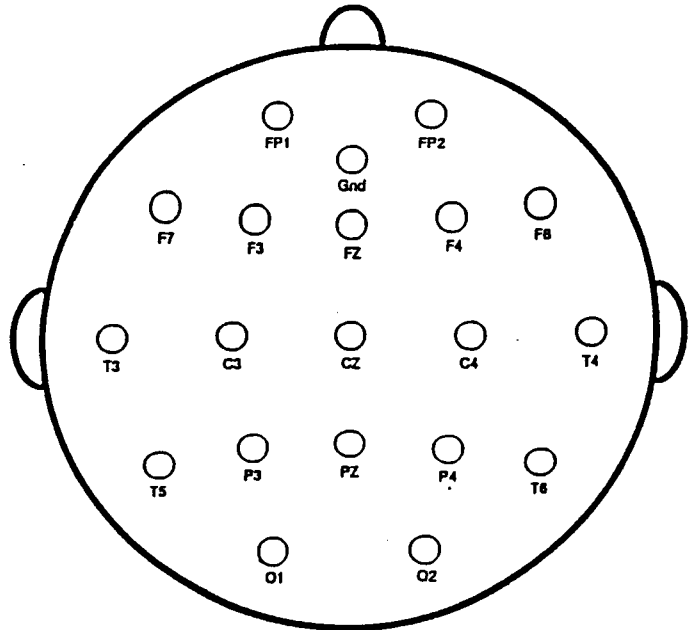


Electro-Cap International, Inc.

SPECIAL ORDER ELECTRO-CAPS

Your connection to the future!!

1. This diagram indicates the standard Electro-Cap positions. Draw a small circle on the diagram where you wish to have special electrodes installed on your cap. Label each position. Draw an "X" through any standard positions you wish to have deleted.
2. Provide a description of each of the special electrode positions. Please be precise, there are no refunds or exchanges on Special Order Caps.
3. Refer to the options below, and choose any that you wish to be incorporated in your design. In any event, indicate your preference for the wiring of the cap.



MOUNT SIZE:

- Standard (16mm OD, 6mm ID)
 Small (11mm OD, 5mm ID)
 (recommended for caps
 with 80 or more electrodes)

CABLE LENGTH:

- 3' (standard)
 Other (please specify)

IN ADDITION TO THE 7 STANDARD SIZES AVAILABLE, THE FOLLOWING CUSTOM SIZES ARE AVAILABLE:

- Med/Lg (56-60cm)
 Med/Sm (52-56cm)
 Sm/Ex Small (48-52cm)
 Ex Small/Infa I (44-48cm)
 Infa I/Infa II (40-44cm)
 Infa II/Infa III (36-40cm)
 Other (please specify)

CAP STYLE:

- Standard Cut
 Surgical
 High Cut
 Low Cut Front
 Low Cut Back

ELECTRODE METAL:

- Tin (standard)
 Gold plated silver
 Silver
 Silver/Silver Chloride

DROPPED WIRES:

- Detachable Electrodes
 Non-Detachable Electrodes

ELECTRODES FOR DROPPED

WIRES:

- 9mm Disk 6mm Disk
 Bio-Potent. Ear Clip
 Other (please specify)

CONNECTOR SIZE:

- 15 pin M F
 25 pin M F
 37 pin M F
 50 pin M F

EAR SLITS:

- Yes

NON-MAGNETIC:

- Yes

OUTSIDE WIRES:

- Yes

ELECTRODE BOARD

ADAPTERS:

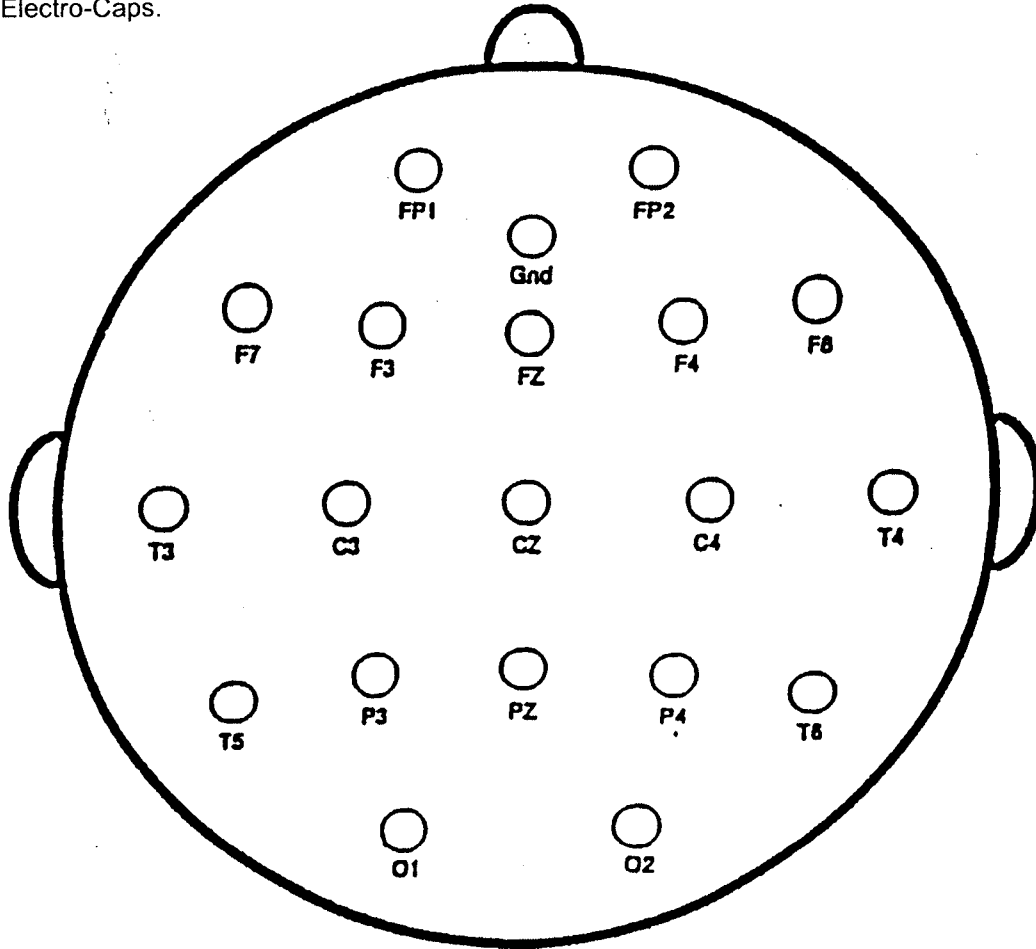
- Yes

rev. 2/12

ELECTRO-CAP INTERNATIONAL — SPECIAL ORDER ELECTRO-CAP FORM

CUSTOMER NAME _____
 CITY _____ STATE _____ COUNTRY _____
 AUTHORIZED BY _____ DATE _____
 SIGNATURE _____ TITLE _____

DIRECTIONS: Step 1 – The diagram below indicates the standard Electro-Cap positions. Draw a small circle on the diagram where you wish to have special electrodes installed on your cap. Label the electrode position (for example "C5"). Draw an "X" through any standard electrode positions you do not want included on your cap. Step 2 – At the bottom of this form (use an additional sheet if necessary) describe the exact location of your special electrode placements. For example, "C5 is located on a line midway between C3 and T3". Please be precise – there are no refunds or exchanges on Special Order Electro-Caps.



- Fp2 ● ● Fp1
- F4 ● ● F3
- C4 ● ● C3
- P4 ● ● P3
- O2 ● ● O1
- F8 ● ● F7
- T4 ● ● T3
- T6 ● ● T5
- Cz ● ● Gnd
- Pz ● ● Fz
- ●
- ●
- ●

DESCRIPTION OF SPECIAL ELECTRODE PLACEMENTS _____

Electro-Cap International, Inc.
 P.O. Box 87 • 1011 W. Lexington Rd.
 Eaton, OH 45320 U.S.A.
 800 527-2193 • 937 456-6099 • FAX: 937 456-7323
www.electro-cap.com eci@electro-cap.com